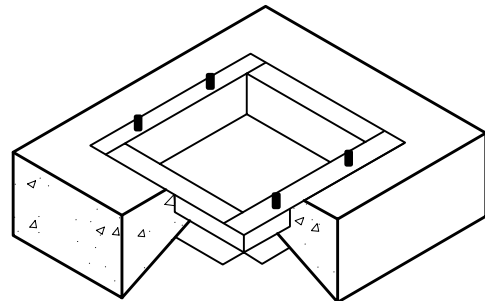
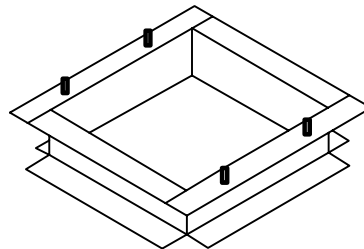


COMMERCIAL ENCLOSURES	PART NO.
"Front door opening commercial enclosure"	AS- (all sizes, all metals)
"Double door - front opening"	ASFDD- (all metals)
"Double door - back to back"	ASDD- (all sizes, all metals)
"Double door - back to back" bottom opener	ASSBO-SS-D18
"Double door - back to back" bottom opener	ASSBO-SS-D24
"Single door" bottom opener	ASBO-SS-18
"Single door" bottom opener	ASBO-SS-24
"Top mount" easy access controller enclosure	ASTO-SS-(all sizes)
"Single door - front opening" (Cal-Trans)	ASCT-(all sizes, all metals)
"Single door - front opening" (Cal-Trans)	ASLT-(all sizes, all metals)
"Double door - back to back" Elect. Meter Box	AS-MCSS-10
"Double door - back to back" Elect. Meter Box	AS-MC-10
"Double door - back to back" Elect. Meter Box	AS-MC-10-XXL (extra large series)
"Front opening" Solid Steel Solar Powered	ASST-8000 (all sizes, all metals)
"Front opening" Solar Powered	ASBF-8000 (all sizes, all metals)

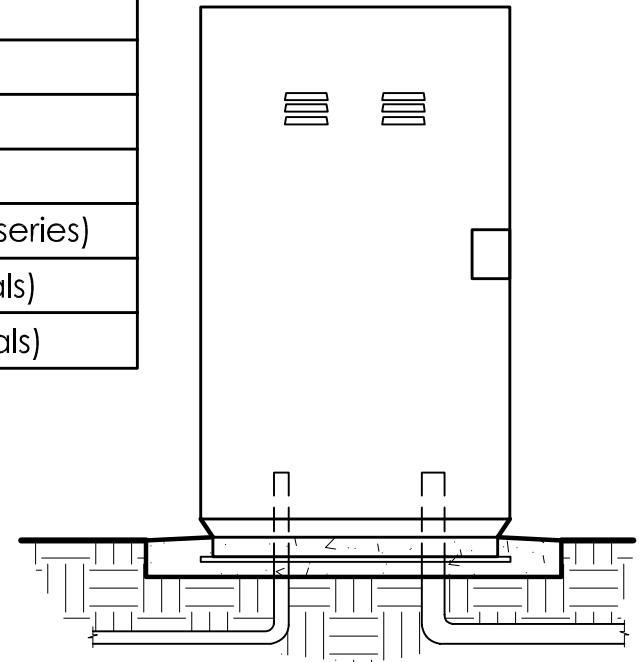
All Spec Universal Mounting Base will fit all AS brand controller enclosures. Please contact mfg. for exact ordering info.



POUR-IN-PLACE INSTALLATION



POUR-IN-PLACE INSTALLATION



PLOT DATE: 06-16-06

ALL - SPEC

UNIVERSAL MOUNTING BASE SPECIFICATIONS