

## COMMERCIAL ENCLOSURE-"back to back door"

### MILD STEEL

PART NO.	A	B	C	WT.
ASDD-18	18"	24"	36"	231
ASDD-23	23"	24"	36"	266
ASDD-2317	23"	34"	36"	306
ASDD-25	25"	26"	41"	271
ASDD-35	35"	24"	36"	357

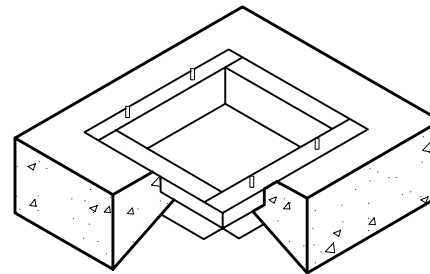
- 3/16" Mild steel
- Steel hinge (full length & staked) on both doors
- Stainless steel hinge pins
- Vandal & weather resistant enclosure is a NEMA 3R rainproof enclosure as listed by Underwriters Laboratories, Inc.
- Safeguard padlock shield on each door
- Pry resistant 1" flanged doors.
- Both doors have louvers with rain-guard shield
- Neoprene weather stripping (full door)
- 3/4" plywood or stainless steel backboard mounted with 4 stainless steel bolts
- Document tray inside door
- Steel fabricated "Universal Mounting Base" with zinc plated hardware
- Limited warranty - 5 years

#### Locking device options, stainless & mild steel

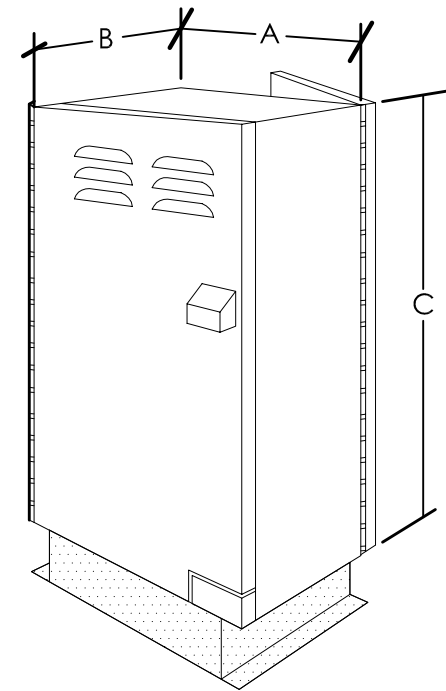
- Single, dual or 3 point locking system
- Key type handles
- Padlock mechanisms
- Slam latch & more

#### Finishes for both stainless & mild steel

- Powder coating - "optional" on stainless steel
- Powder coating - "standard" on mild steel
- Painting - optional



Universal Mounting Base ("Cutaway")  
Custom Sized to "Enclosure Dimensions"



ALL-SPEC - COMMERCIAL ENCLOSURE-"back to back door"