

COMMERCIAL ENCLOSURE-"back to back doors"

STAINLESS STEEL

PART NO.	A	B	C	WT.
ASDD-18SS	18"	24"	36"	145
ASDD-23SS	23"	24"	36"	164
ASDD-2317SS	23"	34"	36"	196
ASDD-25SS	25"	26"	41"	171
ASDD-35SS	35"	24"	36"	231

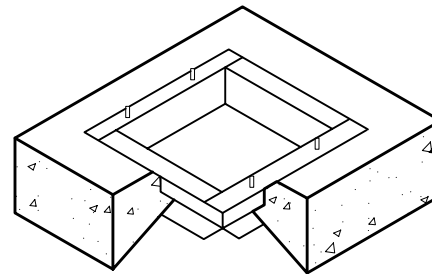
- 12 gauge stainless steel type 304 non magnetic, with #4 finish.
- Stainless steel hinge & pin (staked) on both doors
- Vandal & weather resistant enclosure is a NEMA 3R rainproof enclosure as listed by Underwriter's Laboratories, Inc.
- Safeguard padlock shield on each door
- Pry resistant 1" flanged doors
- Both doors have louvers with rain-guard shield
- Neoprene weather stripping (full door)
- 3/4" plywood or stainless steel backboard mounted with 4 stainless steel bolts
- Document tray inside door
- Stainless steel fabricated "Universal Mounting Base" and hardware
- Limited warranty - 15 years

Locking device options, stainless & mild steel

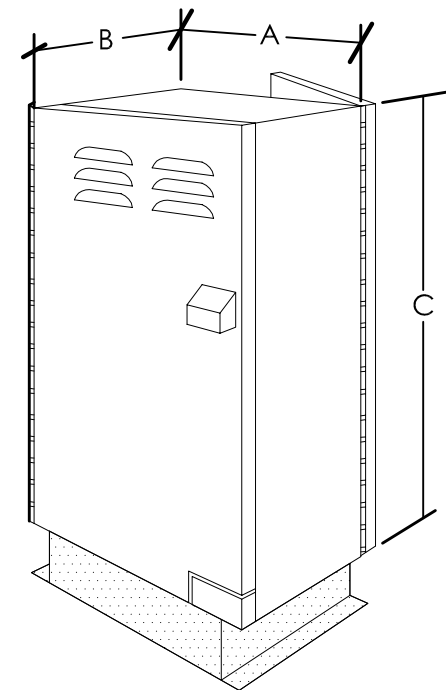
- Single, dual or 3 point locking system
- Key type handles
- Padlock mechanisms
- Slam latch & more

Finishes for both stainless & mild steel

- Powder coating - "optional" on stainless steel
- Powder coating - "standard" on mild steel
- Painting - optional



Universal Mounting Base ("Cutaway")
Custom Sized to "Enclosure Dimensions"



ALL-SPEC - COMMERCIAL ENCLOSURE-"back to back door"