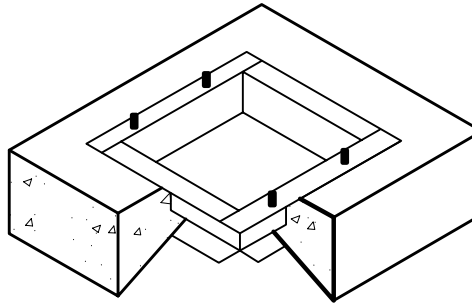


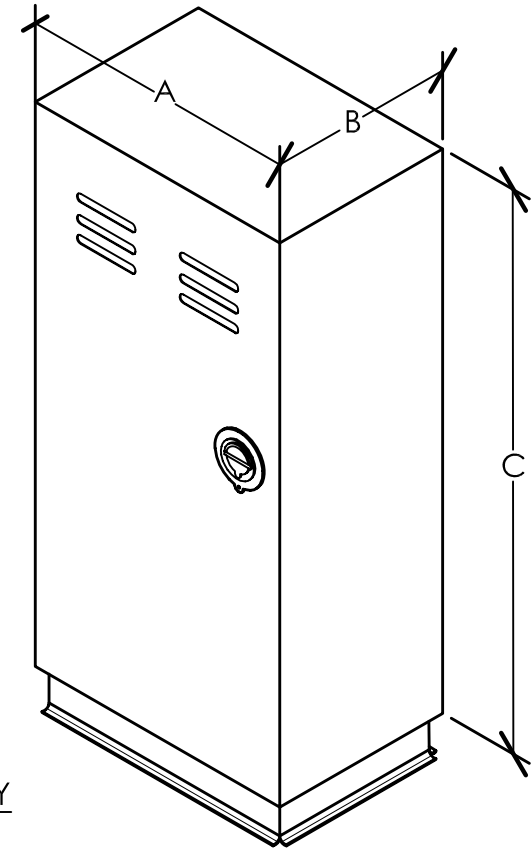
## ALUMINUM

PART NO.	A	B	C	WT.
AS-18ALUL	18"	12"	36"	83
AS-23ALUL	23"	12"	36"	94
AS-2317ALUL	23"	17"	36"	112
AS-25ALUL	25"	13"	41"	132
AS-35ALUL	35"	12"	36"	98

- .125 Aluminum
- 5052 Type Aluminum
- Aluminum hinge (full length)
- Vandal & weather resistant enclosure  
NEMA 3R rain proof enclosure as listed  
by Underwriters Laboratories, Inc.
- Pry resistant 1" flanged doors.
- Front door louvers with rain-guard shield.
- Neoprene weather striping (full door)
- 3/4" plywood or aluminum backboard  
mounted with 4 aluminum bolts.
- Internal document tray inside door.
- Steel fabricated "Universal Mounting  
Base" with aluminum hardware.
- U.L listed (round T-Handle) with a 3-point  
internal locking system.
- Limited warranty 10 years
- Powder coating optional



POUR IN PLACE WITH CUTAWAY  
UNIVERSAL MOUNTING BASE



PLOT DATE: 06-20-06