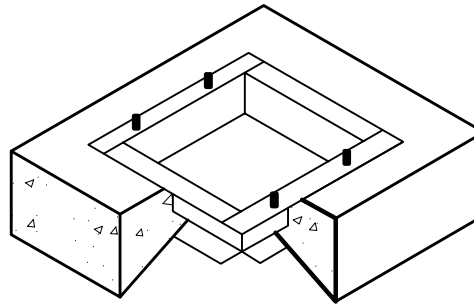


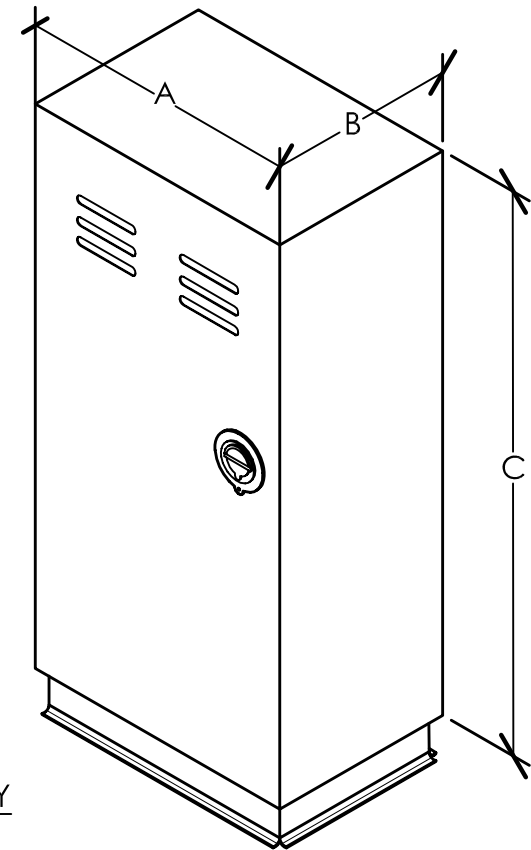
MILD STEEL

PART NO.	A	B	C	WT.
AS-18UL	18"	12"	36"	132
AS-23UL	23"	12"	36"	152
AS-2317UL	23"	17"	36"	175
AS-25UL	25"	13"	41"	204
AS-35UL	35"	12"	36"	155

- 3/16" gauge mild steel
- Steel hinge (full length and staked).
- Stainless steel hinge pins
- Vandal & weather resistant enclosure
NEMA 3R rain proof enclosure as listed
by Underwriters Laboratories, Inc.
- Pry resistant 1" flanged doors.
- Front door louvers with rain-guard shield.
- Neoprene weather striping (full door)
- 3/4" plywood or steel backboard
mounted with 4 steel bolts.
- Internal document tray inside door.
- Steel fabricated "Universal Mounting
Base" with zinc plated hardware.
- U.L listed (round T-Handle) with a 3-point
internal locking system.
- Limited warranty 5 years
- Powder coating standard



POUR IN PLACE WITH CUTAWAY
UNIVERSAL MOUNTING BASE



PLOT DATE: 06-20-06