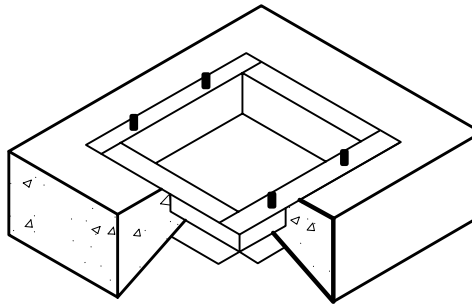


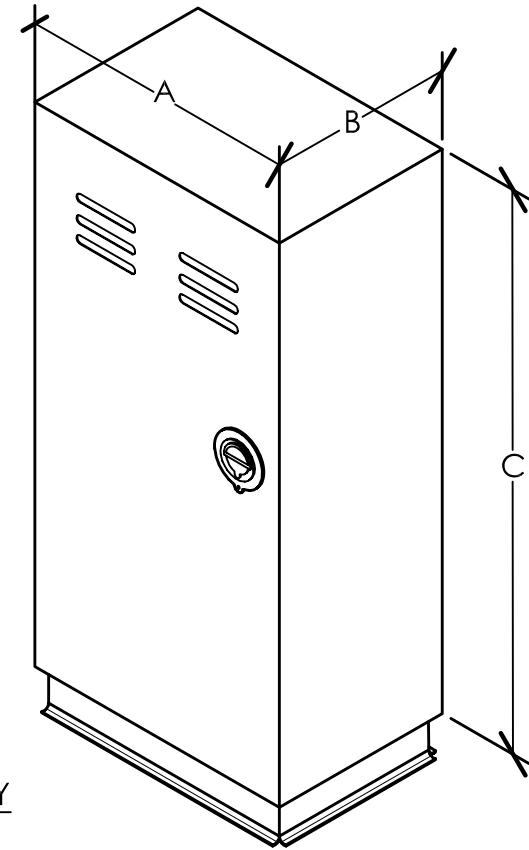
## STAINLESS STEEL

PART NO.	A	B	C	WT.
AS-18SSUL	18"	12"	36"	83
AS-23SSUL	23"	12"	36"	94
AS-2317SSUL	23"	17"	36"	112
AS-25SSUL	25"	13"	41"	132
AS-35SSUL	35"	12"	36"	98

- 12 gauge stainless steel type 304 non magnetic, with #4 finish stainless steel hinge (full length and staked).
- Stainless steel hinge pins
- Vandal & weather resistant enclosure  
NEMA 3R rain proof enclosure as listed by Underwriters Laboratories, Inc.
- Pry resistant 1" flanged doors.
- Front door louvers with rain-guard shield.
- Neoprene weather striping (full door)
- 3/4" plywood or stainless steel backboard mounted with 4 stainless steel bolts.
- Internal document tray inside door.
- Steel fabricated "Universal Mounting Base" and stainless steel hardware.
- U.L listed (round T-Handle) with a 3-point internal locking system.
- Limited warranty 15 years
- Powder coating (optional)



POUR IN PLACE WITH CUTAWAY  
UNIVERSAL MOUNTING BASE



PLOT DATE: 06-20-06