

NOTE:

1. All sizes in the dual swing enclosure series: Part No. BFED & BFED-SS.

The "dual swing" backflow enclosure opens from the center outwards in opposite directions.

Both halves pivot up to a 90° position from the horizontal plane to allow access to the backflow equipment.

All-Spec "dual swing" backflow enclosures come with complete mounting hardware, including (4 ea.) hinge plates with nuts, bolts & washers.

The Padlock assembly is welded to the enclosure, no assembly.

- The 4 hinge plates are installed on opposite sides from one another, on both halves of the enclosure and must be positioned in the poured concrete base as indicated so that
- the top of the hinge plates are 3 1/2" above the finished concrete base. When installed correctly the "dual swing" enclosure should have a 2" clearance above the poured concrete base.

The poured concrete base must be constructed to local code. If none exists, construct the base 6" in depth and 6" greater on all sides than the "outside" dimensions of the backflow enclosure.

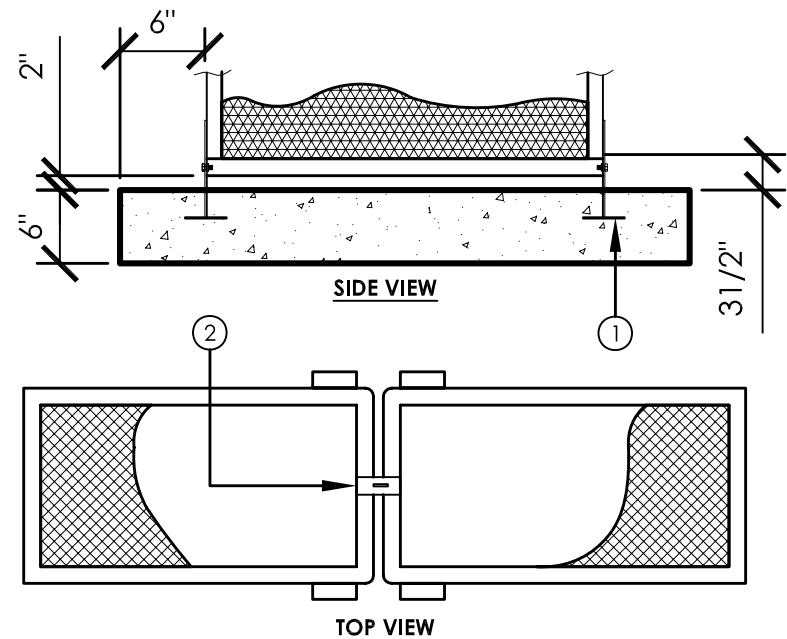
Note:

Both the single swing and dual swing enclosures require a 2" clearance above the poured concrete base to allow for clearance when the enclosures swing open, if you have other requirements pertaining to this installation procedure please contact the manufacturer.

Installation Contractor:

The installation contractor must assure the proper position of the "padlock assembly" and "hinge plates" when placing them in the concrete pour to make certain they align with the "padlock plate" and "bolt holes" on the enclosure.

- ① Bolt and hinge
- ② Padlock assembly and lifting handles shown in center are illustrated at the four corners.



PLOT DATE: 06-16-06